

CASE REPORT

Open Access

Acute kidney injury associated with minimal change disease in systemic lupus erythematosus: a case report

Xin Wei¹, Ying Wang¹, Luxia Tu², Hongping Wan² and Qinkai Chen^{1*}

Abstract

Introduction: In systemic lupus erythematosus, acute kidney injury is usually associated with severe lupus nephritis and rarely associated with other glomerular diseases.

Case presentation: We recently encountered a patient with acute kidney injury that was associated with minimal change disease in systemic lupus erythematosus. A 26-year-old Chinese woman who had a history of systemic lupus erythematosus presented with nephrotic syndrome and acute kidney injury. She fulfilled four of the American College of Rheumatology criteria for the classification of systemic lupus erythematosus. However, a renal biopsy revealed that there were no glomerular abnormalities or deposition of immune complex. Her generalized edema disappeared, and her high serum creatinine level decreased to normal after prednisolone therapy.

Conclusion: Though the relationship between lupus and minimal change disease is still not defined, the possibility of systemic lupus erythematosus combined with minimal change disease must be differentiated in patients with lupus and severe proteinuria.

Keywords: Acute kidney injury, Minimal change disease, Systemic lupus erythematosus

Introduction

Systemic lupus erythematosus (SLE) is an autoimmune disease characterized by pathogenic autoantibodies and deposition of immune complexes in various organs. Lupus nephritis (LN) is caused by immune complex deposition in the glomerulus [1].

Diffuse proliferative LN and membranous LN are two predominate pathologic findings in LN. SLE combined with minimal change disease (MCD) has rarely been reported. In this report, we describe the case of a patient with SLE who had acute kidney injury (AKI) caused by MCD. She was treated successfully with steroids with a follow-up duration of 2 years.

Case presentation

A 26-year-old Chinese woman with a history of SLE of 10 years presented to our hospital. Her initial symptoms

10 years before her visit had been arthritis, malar erythema and prolonged fever. The following were her laboratory investigation results at that time: antinuclear antibody (ANA) titer, 1:160 (+); anti-Smith (anti-Sm) antibody, +; urinary protein level, 3+; hematuria, -; complement 3 value, 0.36g/L. Her renal function test and hematologic evaluation results were within normal ranges. A renal biopsy was not conducted at that time. Prednisolone 1mg/kg/day (40mg/day) was prescribed first and then gradually tapered to 5mg/day over the course of 12 months. The patient had complete remission of signs and symptoms of SLE after the corticosteroid treatment. She took prednisolone 5mg/day as maintenance therapy during the next 10 years.

When she was admitted to our hospital, she had a rapidly progressive edema and oliguria (urine output was about 250ml/day). Her physical examination revealed that she had mild edema of the face and legs. She had not taken any drugs other than prednisolone within the preceding 6 months. Her blood pressure level was 108/71mmHg. Her heart and lungs were normal. No liver, spleen or lymph node enlargement was found. The

* Correspondence: timmyclz@163.com

¹Department of Nephrology, The First Affiliated Hospital, Nan Chang University, YongWai street 17#, Nanchang city, Jiangxi province 330006, China

Full list of author information is available at the end of the article

following were the results of her laboratory investigations: urinary protein, 3+; 24-hour urinary protein, 4.16g/day; hematuria, -; blood urea nitrogen, 21.0mmol/L; creatinine, 455μmol/L; albumin, 22.8g/L; total cholesterol, 5.26mmol/L; triglycerides, 1.45mmol/L; hemoglobin, 10.3g/dl; white blood cell count, 3.08×10⁹/L; red blood cell count, 3.53×10¹²/L; platelets, 81×10⁹/L; ANA, 1:320 (+); complement 3, 0.60g/L; anti-DNA antibody-negative; anti-Sm antibody-negative; anti-ribonucleoprotein-negative; hepatitis B surface antigen-negative; anti-hepatitis C virus-negative; and anti-HIV-negative. Her chest digital radiography and abdominal ultrasonography results were normal. She did not have any other comorbid conditions or recent infections. Within just 1 week, the patient's symptoms got worse, her edema became aggravated, her urine output decreased to 50ml/day and her serum creatinine level rose to 550μmol/L (Table 1).

Our first diagnostic impression was severe LN. A percutaneous renal biopsy was performed on the patient's fourth hospital day. Unexpectedly, glomeruli showed an almost normal appearance under light microscopy. The capillary lumina were patent. The basement membranes were intact and not duplicated. The mesangium was not widened and was not proliferated. The interstitium space showed a multifocal, mild mononuclear cell infiltration. The tubules were minimally atrophic. The vessels were unremarkable. There was no obvious chronic damage in the kidney (Figure 1). Immunofluorescence microscopy revealed an absence of deposits of immunoglobulin, complements and fibrinogen. By electron microscopy, we observed a marked effacement of the foot processes of podocytes as well as a microvillous transformation. The mesangial area was unremarkable. The basement membrane was irregularly wrinkled. The capillary lumina were patent. There were no electron deposits observed by electron microscopy (Figure 2). With a diagnosis of MCD, an "adequacy" dose steroid regimen (prednisolone 1mg/kg/day, 50mg/day) was administered orally. Other adjunct therapies included hemodialysis, diuresis and supplemental plasma albumin.

A few days after the initiation of steroids, the patient's edema and her high serum creatinine level remitted slowly (Figure 3). By the 17th day of therapy, her serum

Table 1 Changes in multiple indicators during admission^a

Hospital day	SCr (μmol/L)	Alb (g/L)	Urine output (ml/24 hr)	ANA	C3 (g/L)
1	455	22.8	250	1:320	0.31
4 ^b	550	21.9	50	-	-
10	184	24.6	750	-	-
15	99.5	25	1500	-	-
20	58.6	26.4	2000	1:100	0.6

^aAlb, Albumin; ANA, Antinuclear antibody; C3, Complement 3; SCr, Serum creatinine. ^bStart of prednisolone administration.

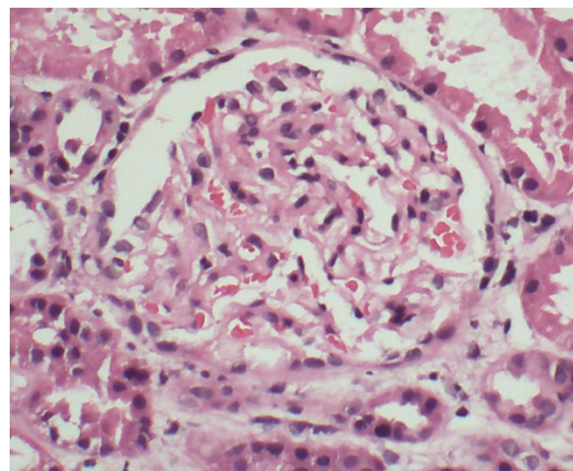


Figure 1 Light microscopy of the patient's renal biopsy tissue.

We found that 18 glomeruli were present in the sample. The glomeruli show an almost normal appearance. The capillary lumina are patent. The basement membranes are intact and not duplicated. The mesangium is not widened and not proliferated. The interstitial space shows a multifocal, mild mononuclear cell infiltration. The tubules are minimally atrophic. The vessels are unremarkable. There is no obvious chronic damage in the kidney. Hematoxylin and eosin stain; original magnification, ×200.

creatinine level decreased to a normal level (58.6μmol/L), and her serum albumin and urine output increased to 26.4g/L and 2000ml/24 hr, respectively (Table 1). She was discharged from the hospital with improved symptoms and signs. One month after she was discharged, laboratory

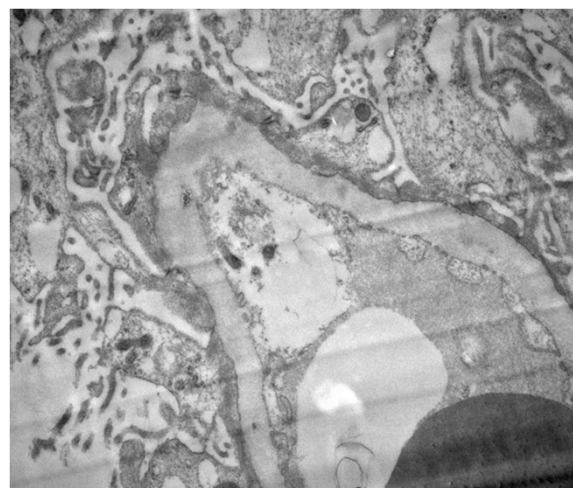
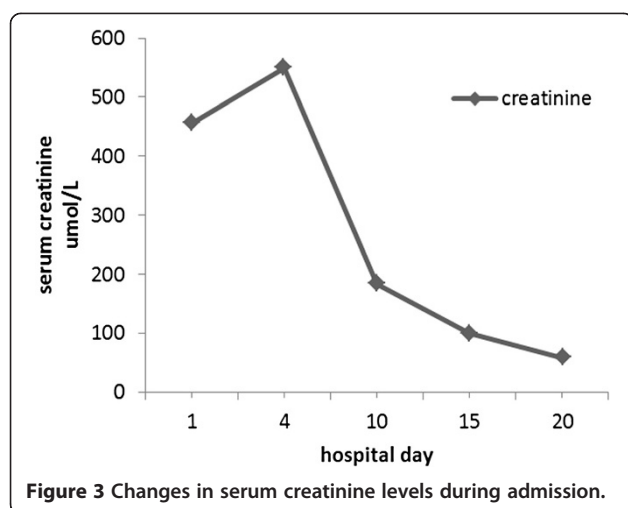


Figure 2 Electron microscopy of the patient's renal biopsy.

This section shows a marked effacement of the foot processes of podocytes as well as a microvillous transformation. The mesangial area is unremarkable. The basement membrane is irregularly wrinkled. The capillary lumina are patent. No electron deposits are visible. Uranyl acetate and lead citrate double-stain; original magnification, ×15,000.



investigations revealed negative urinary protein and normal serum albumin levels. The dosage of oral steroids was tapered gradually over the course of the next 10 months. After continuous treatment, her nephrotic syndrome resolved completely and no signs of relapse were noted during 2 years of follow-up.

Discussion

SLE is a prototype autoimmune disease involving multiple organs, with the kidney being most common. This disease is known as LN. A large number of immune complex depositions in the kidney are the main reason for the onset of LN. A “full-house” phenomenon visualized under an immunofluorescence microscope and electron-dense deposits in the glomeruli are its main pathological features. According to the International Society of Nephrology and Renal Pathology Society (ISN/RPS) consensus, LN is classified into types I to VI. The nephrotic syndrome

is commonly associated with diffuse, proliferative LN (ISN/RPS class IV) and membranous LN (ISN/RPS class V) [2]. Our patient had a long history of SLE; however, her renal biopsy findings and clinical course were typical of MCD.

The coexistence of AKI, MCD and SLE, as we saw in our patient, is extremely rare. Treatments for LN and MCD are different. Patients with ISN/RPS class III or IV LN should receive long-term aggressive therapy, including high doses of daily oral corticosteroids, intravenous pulses of corticosteroids, intravenous pulses of cyclophosphamide therapy, mycophenolate mofetil and cyclosporine A, among other medications [3]. However, treatments for MCD mainly involve oral corticosteroids for 6 months to 1 year, possibly in addition to other immunosuppressive therapies. The clinical diagnosis, prognosis and treatment of LN should be assessed with the support of a histological analysis, unless a renal biopsy is performed, in which case administration of a cytotoxic agent is unavoidable.

The presence of lupus and MCD in the same patient may not be just a coincidence. In the literature, 13 cases on the association between SLE and MCD have been reported (Table 2) [4-9]. Among these cases, SLE developed simultaneously with the onset of MCD in five cases and after the onset of MCD in three cases. MCD developed during the course of SLE in five patients. Among these 13 patients, four patients combined with abnormal renal function. Only one case was linked to nonsteroidal anti-inflammatory drugs (NSAIDs); the rest of the patients had no obvious secondary factors. After administration of prednisolone or NSAID discontinuation, remission was achieved in all patients. Their edema disappeared, their serum creatinine decreased to normal levels and their urinary protein turn to negative.

Table 2 Literature review of patients with SLE and MCD^a

Author	Year	Sex	Age, yr	SCr (mg/dl)	Clinical course
Matsumura et al. [10]	1989	F	37	n.d.	SLE developed when MCD relapsed
		F	21	n.d.	SLE developed when MCD relapsed
		F	22	n.d.	SLE developed simultaneously with onset of MCD
Okai et al. [5]	1992	M	22	n.d.	SLE developed simultaneously with onset of MCD
Makino et al. [11]	1995	F	41	1.51	MCD developed during course of SLE
Horita et al. [4]	1997	F	25	n.d.	SLE developed simultaneously with onset of MCD
Nishihara et al. [12]	1997	F	17	0.5	SLE developed when MCD was in remission
Guery et al. [13]	1998	F	27	3.41	SLE developed simultaneously with onset of MCD
Perakis et al. [14]	1998	F	45	1.1	MCD developed during course of SLE
Seo et al. [8]	2002	F	41	2.2	SLE developed simultaneously with onset of MCD
Wang et al. [7]	2006	F	19	1.9	MCD developed during course of SLE (NSAID-induced)
Hong et al. [6]	2011	F	24	0.6	MCD developed during course of SLE
Redondo-Pachón et al. [9]	2012	F	59	0.75	MCD developed during course of SLE

^aMCD, Minimal change disease; n.d., No data SCr, serum creatinine; SLE, Systemic lupus erythematosus.

Our patient had significant proteinuria at the time of her initial diagnosis of lupus; regrettably, a renal biopsy was not performed at that time. Thus, we were unable to distinguish which lesion developed first or whether they arose simultaneously. The association between MCD and the concurrent presence of SLE is not absolutely clear. Immune abnormalities, especially T-cell dysfunction, were considered to be the common cause of SLE and MCD in our patient. Patients with SLE with a renal involvement have a low helper/suppressor T-cell ratio. In MCD, glomerular permeability factors derived from T cells, such as interleukin 13, is known to increase glomerular permeability [15]. There may be another pathogenic link, which is known to be associated with genes coded within the major histocompatibility complex between these two diseases. A question remains whether SLE simply co-occurs with MCD or is a precipitating agent of MCD.

Conclusion

We reported a case of AKI associated with MCD in a patient with SLE. On the basis of our experience in this case, we offer two suggestions. First, a renal biopsy should be performed in patients with SLE to exclude other nephrotic diseases. Second, there may be an immunological association between SLE and MCD. Further investigation is needed to understand the relationship between SLE and MCD.

Consent

Written informed consent was obtained from the patient for publication of this case report and any accompanying images. A copy of the written consent is available for review by the Editor-in-Chief of this journal.

Abbreviations

AKI: Acute kidney injury; ANA: Antinuclear antibody; LN: Lupus nephritis; MCD: Minimal change disease; NSAID: Nonsteroidal anti-inflammatory drug; SLE: Systemic lupus erythematosus.

Competing interests

The authors declare that they have no competing interests.

Authors' contributions

XW was responsible for the case collection, case follow up and manuscript writing. YW contributed towards case collection and laboratory testing. LT and HW helped with the pathological diagnosis. Qinkai Chen contributed towards the case collection, clinical treatment and critical correction for the manuscript. All authors read and approved the final manuscript.

Acknowledgements

We acknowledge Qiuyue Li of the First Affiliated Hospital of Nanchang University for her support in revising the manuscript critically for important intellectual content.

Author details

¹Department of Nephrology, The First Affiliated Hospital, Nan Chang University, YongWai street 17#, Nanchang city, Jiangxi province 330006, China. ²Department of Pathology, The First Affiliated Hospital, Nan Chang University, YongWai street 17#, Nanchang city 330006, China.

Received: 18 May 2014 Accepted: 15 October 2014

Published: 13 December 2014

References

1. Mills JA: **Systemic lupus erythematosus.** *N Engl J Med* 1994, **330**:1871–1879.
2. Weening JJ, D'Agati VD, Schwartz MM, Seshan SV, Alpers CE, Appel GB, Balow JE, Bruijn JA, Cook T, Ferrario F, Fogo AB, Ginzler EM, Hebert L, Hill G, Hill P, Jennette JC, Kong NC, Lesavre P, Lockshin M, Looi LM, Makino H, Moura LA, Nagata M, the International Society of Nephrology and Renal Pathology Society Working Group on the Classification of Lupus Nephritis: **The classification of glomerulonephritis in systemic lupus erythematosus revisited.** *Kidney Int* 2004, **65**:521–530. A published erratum appears in *Kidney Int* 2004, **65**:1132.
3. Houssiau FA: **Management of lupus nephritis: an update.** *J Am Soc Nephrol* 2004, **15**:2694–2704.
4. Horita Y, Nazneen A, Cheng M, Razzaque MS, Namie S, Tadokoro M, Taura K, Miyazaki M, Ozono Y, Kohno S, Harada T, Taguchi T: **A case of systemic lupus erythematosus associated with minimal change nephrotic syndrome** [Article in Japanese]. *Nihon Jinzo Gakkai Shi* 1997, **39**:759–764.
5. Okai T, Soejima A, Suzuki M, Yomogida S, Nakabayashi K, Kitamoto K, Nagasawa T: **[A case report of lupus nephritis associated with minimal change nephrotic syndrome—comparison of various histological types of 67 cases with lupus nephritis]** [Article in Japanese]. *Nihon Jinzo Gakkai Shi* 1992, **34**:835–840.
6. Hong YH, Yun DY, Jung YW, Oh MJ, Kim HJ, Lee CK: **A case of minimal change disease treated successfully with mycophenolate mofetil in a patient with systemic lupus erythematosus.** *Korean J Intern Med* 2011, **26**:470–473.
7. Wang YT, Chou HH, Chen FF, Chen MJ, Chiou YY: **A case of minimal-change nephrotic syndrome in pediatric lupus erythematosus: just a coincidence?** *Lupus* 2006, **15**:244–247.
8. Seo DB, Lee SW, Song JH, Lee KJ, Han JY, Kim MJ: **Acute renal failure associated with a minimal change nephrotic syndrome in a systemic lupus erythematosus patient.** *Yonsei Med J* 2002, **43**:114–118.
9. Redondo-Pachón MD, Enríquez R, Sirvent AE, Andrada E, Millán I, Amorós F: **Minimal-change nephropathy in systemic lupus erythematosus.** *Nefrologia* 2012, **32**:412–413.
10. Matsumura N, Dohi K, Shiiki H, Morita H, Yamada H, Fujimoto J, Kanauchi M, Hanatani M, Ishikawa H: **[Three cases presenting with systemic lupus erythematosus and minimal change nephrotic syndrome]** [Article in Japanese]. *Nihon Jinzo Gakkai Shi* 1989, **31**:991–999.
11. Makino H, Haramoto T, Shikata K, Ogura T, Ota Z: **Minimal-change nephrotic syndrome associated with systemic lupus erythematosus.** *Am J Nephrol* 1995, **15**:439–441.
12. Nishihara G, Nakamoto M, Yasunaga C, Takeda K, Matsuo K, Urabe M, Goya T, Sakemi T: **Systemic lupus erythematosus in a patient with remitting minimal change nephrotic syndrome.** *Clin Nephrol* 1997, **48**:327–330.
13. Guery B, Martinez F, Beaufile H, Deray G: **Minimal-change nephropathy associated with systemic lupus erythematosus.** *Nephrol Dial Transplant* 1997, **12**:2030–2031.
14. Perakis C, Arvanitis A, Sotsiou F, Emmanouel DS: **Nephrotic syndrome caused by minimal-change disease in a patient with focal proliferative SLE nephritis (WHO III) in remission.** *Nephrol Dial Transplant* 1998, **13**:467–470.
15. Sekine H, Graham KL, Zhao S, Elliott MK, Ruiz P, Utz PJ, Gilkeson GS: **Role of MHC-linked genes in autoantigen selection and renal disease in a murine model of systemic lupus erythematosus.** *J Immunol* 2006, **177**:7423–7434.

doi:10.1186/1752-1947-8-422

Cite this article as: Wei et al.: Acute kidney injury associated with minimal change disease in systemic lupus erythematosus: a case report. *Journal of Medical Case Reports* 2014 **8**:422.